

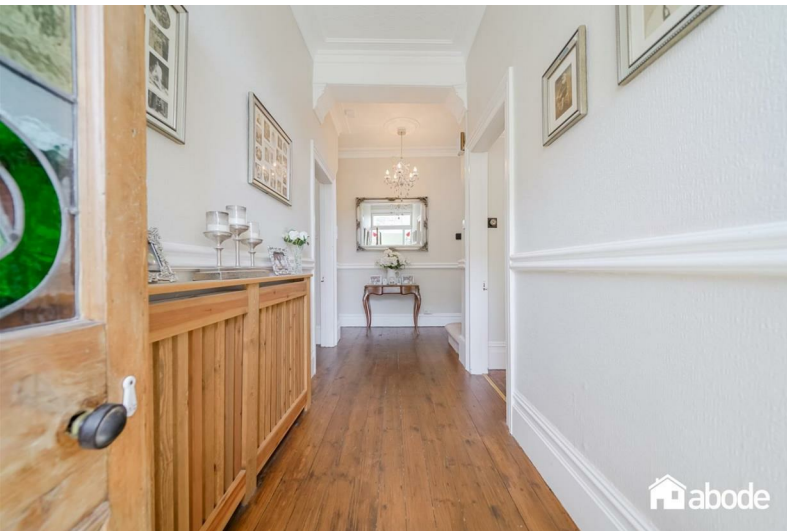


3 Belvidere Road

Crosby, L23 0SR

£700,000

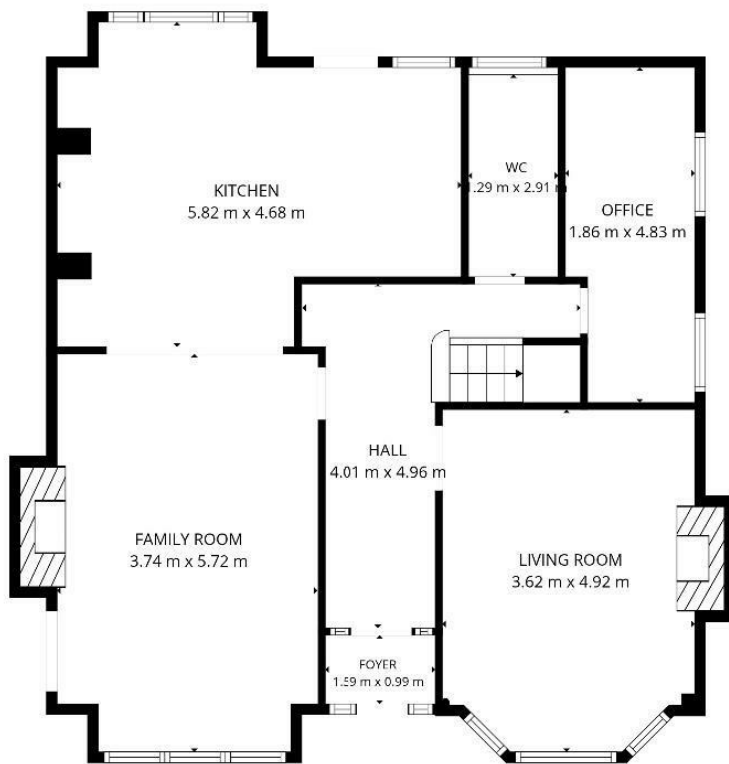
 5  1  2  D



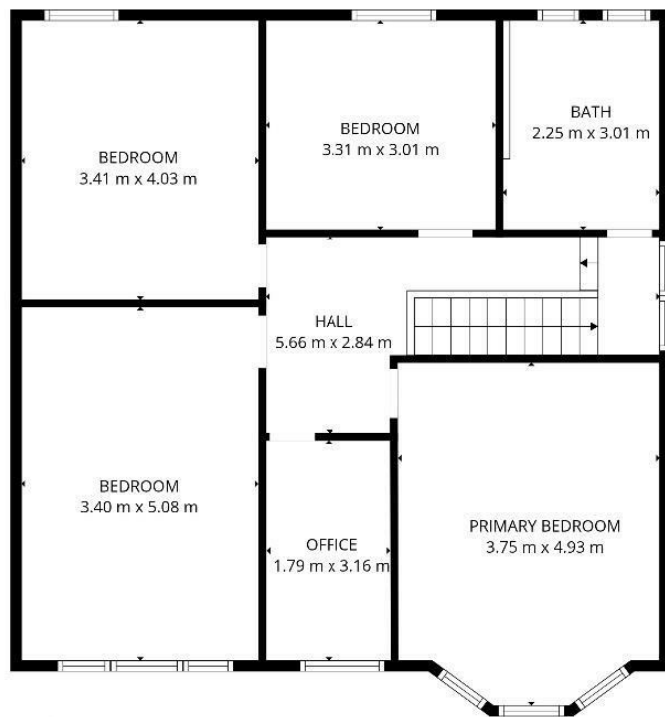
3 Belvidere Road

Crosby, L23 0SR

£700,000



Ground floor



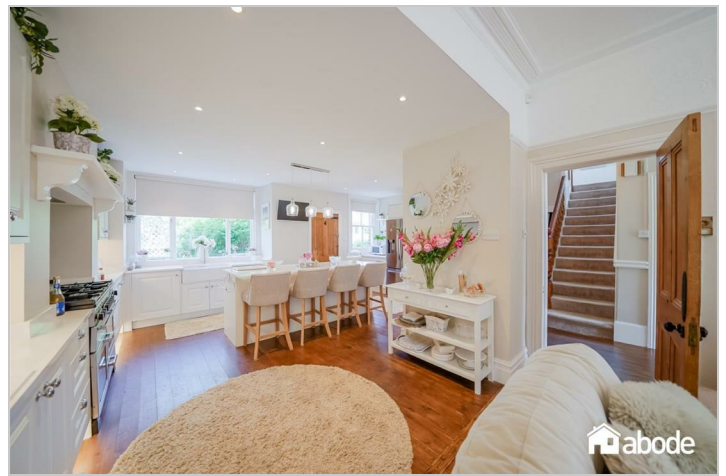
1st floor

TOTAL: 175 m²

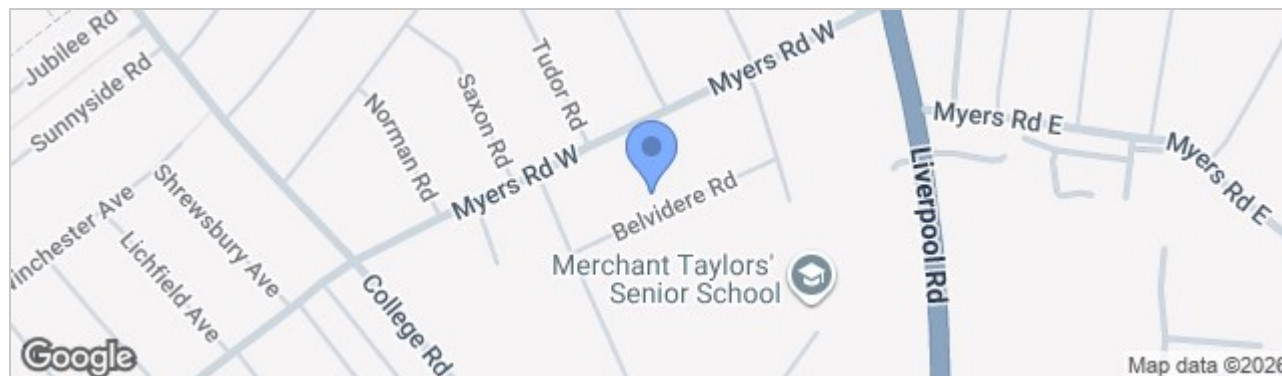
Ground floor: 89 m², 1st floor: 86 m²

EXCLUDED AREAS: FIREPLACE: 2 m², WALLS: 11 m²

FLOOR PLAN CREATED BY CUBICASA APP. MEASUREMENTS DEEMED HIGHLY RELIABLE BUT NOT GUARANTEED.



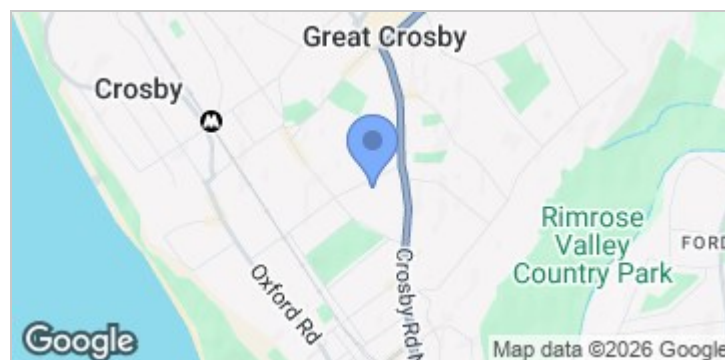
Road Map



Hybrid Map



Terrain Map



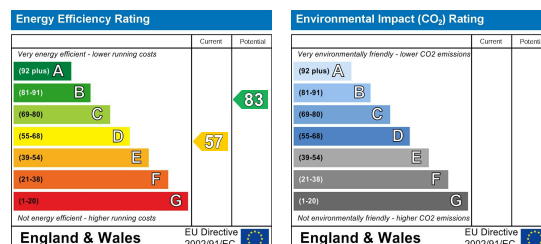
- **ELEGANT FIVE-BEDROOM DETACHED EDWARDIAN HOME IN CROSBY**
- **TWO SPACIOUS RECEPTION AREAS OFFER FLEXIBLE LIVING AND ENTERTAINING SPACE FOR THE WHOLE FAMILY**
- **CONTEMPORARY KITCHEN WITH A LARGE ISLAND FLOWS EFFORTLESSLY FROM THE SECOND LOUNGE AREA, IDEAL FOR SOCIAL OCCASIONS.**
- **FIVE BEDROOMS AND A MODERN FAMILY BATHROOM PROVIDE COMFORTABLE ACCOMMODATION UPSTAIRS.**
- **ATTRACTIVE OUTDOOR SETTING FEATURES A COVERED SEATING AREA, EXTENSIVE PATIO SPACE, AND USEFUL OUTBUILDINGS**
- **EASY REACH OF SCHOOLS AND LOCAL AMENITIES.**
- **[HTTPS://WWW.RIGHTMOVE.CO.UK/STAMP-DUTY-CALCULATOR](https://www.rightmove.co.uk/stamp-duty-calculator)**

Viewing

Please contact our Crosby Office on 01519093003 if you wish to arrange a viewing appointment for this property or require further information.

These particulars, whilst believed to be accurate are set out as a general outline only for guidance and do not constitute any part of an offer or contract. Intending purchasers should not rely on them as statements of representation of fact, but must satisfy themselves by inspection or otherwise as to their accuracy. No person in this firm's employment has the authority to make or give any representation or warranty in respect of the property.

Energy Efficiency Graph



82 Coronation Road, Crosby, Liverpool L23 5RH

6 Allerton Road, Mossley Hill, Liverpool, L18 1LN

2 Chapel Lane, Formby, Liverpool, L37 4DU

Tel: 0151 909 3003
Email: crosby@abode.group.co.uk
Web: www.abode-group.co.uk

Tel: 0151 601 3003
Email: allerton@abode-group.co.uk
Web: www.abode-group.co.uk

Tel: 01704 827 402
Email: formby@abode-group.co.uk
Web: www.abode-group.co.uk